

Section 36-3 The Integumentary System

(pages 933-936)

Key Concept

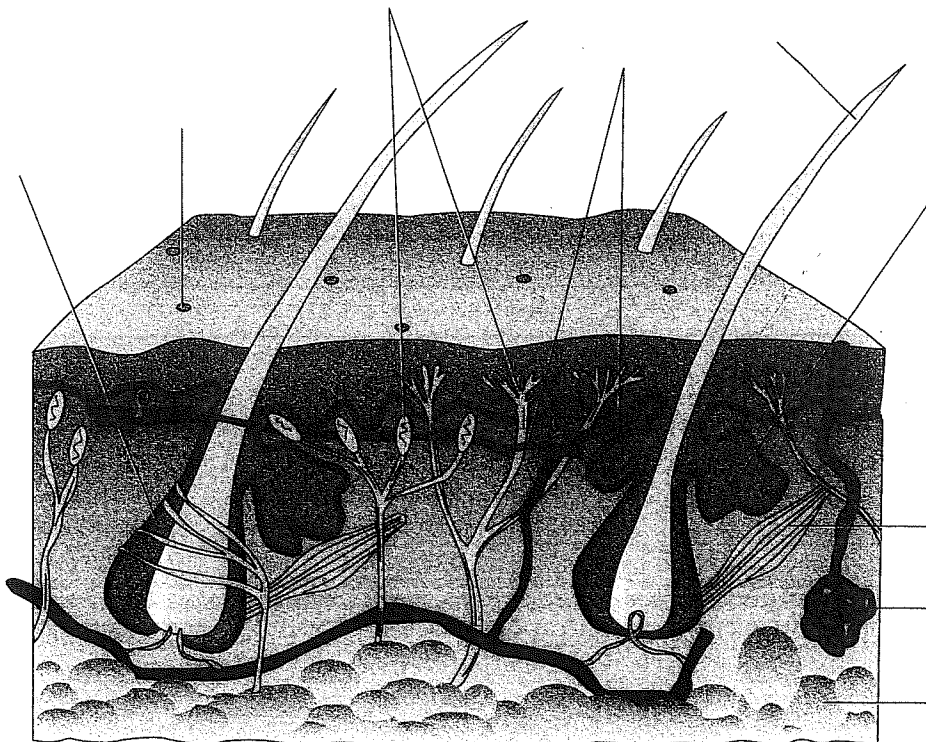
- What are the functions of the integumentary system?

Introduction (page 933)

1. Circle the letter of each choice that is part of the integumentary system.
 - a. skin
 - b. bones
 - c. cartilage
 - d. nails

The Skin (pages 933-936)

2. The most important function of the skin is _____.
3. List the four functions of the integumentary system.
 - a. _____
 - b. _____
 - c. _____
 - d. _____
4. The largest component of the integumentary system is the _____.
5. The outer layer of skin is called the _____.
6. Is the following sentence true or false? The inner layer of the epidermis is made up of dead cells. _____
7. Label the structures of the skin.



Match each term with its definition.

	Term	Definition
_____	8. keratin	a. Tough, fibrous protein
_____	9. melanin	b. Inner layer of the skin
_____	10. dermis	c. Dark brown pigment

11. Circle the letter of each sentence that is true about melanocytes.
- a. Melanocytes are cells that produce melanin.
 - b. Most people have roughly the same number of melanocytes in their skin.
 - c. All melanocytes produce about the same amount of melanin.
 - d. Most people have the same distribution of melanocytes in their skin.
12. Is the following sentence true or false? The epidermis contains blood vessels.
- _____
13. Circle the letter of each type of structure that is found in the dermis.
- a. blood vessels
 - b. nerve endings
 - c. glands
 - d. hair follicles
14. How does the dermis help regulate body temperature? _____
- _____
- _____
- _____
- _____
15. List the two types of glands contained in the dermis.
- a. _____
 - b. _____
16. How does sweat help keep you cool? _____
- _____
17. What is the function of sebum? _____
- _____

Hair and Nails (page 936)

18. The basic structure of human hair and nails is _____.

19. List the two functions of head hair.

a. _____

b. _____

20. How does hair in the nose and ears and around the eyes help protect the body?

21. Hair is produced by cells called _____.

22. Is the following sentence true or false? Hair is composed of cells that have died.

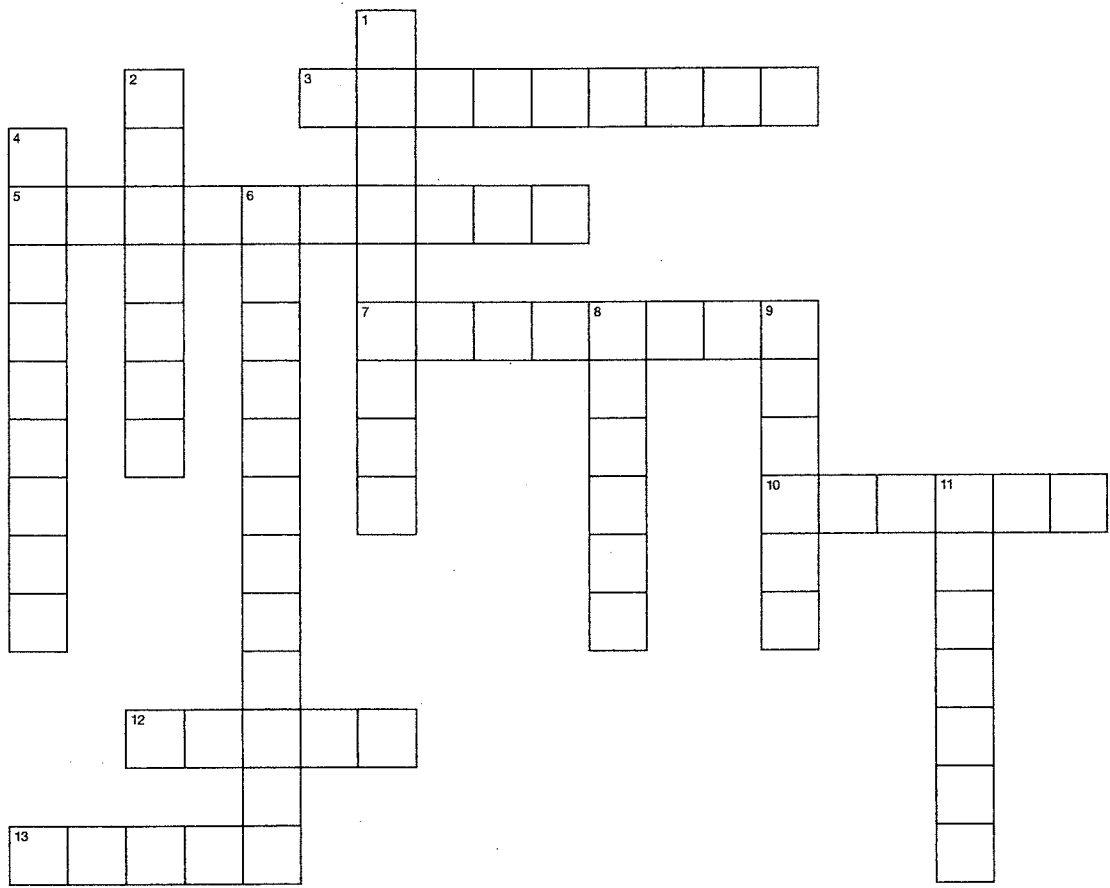
23. What causes hair to grow? _____

24. What is the nail root? _____

Chapter 36 Skeletal, Muscular, and Integumentary Systems

Vocabulary Review

Crossword Puzzle Complete the puzzle by entering the term that matches each numbered description.



Across

- 3. type of canals in bone that contain blood vessels and nerves
- 5. tough layer of connective tissue that surrounds bone
- 7. tough connective tissue that holds bones together in a joint
- 10. layer of skin that contains glands and blood vessels
- 12. place where one bone attaches to another bone
- 13. protein found in thin muscle filaments

Down

- 1. type of connective tissue that is replaced by bone as a person grows
- 2. protein found in hair and nails
- 4. layer of skin where melanocytes are located
- 6. process in which cartilage is replaced by bone
- 8. protein found in thick muscle filaments
- 9. tough connective tissue that joins skeletal muscle to bone
- 11. dark brown pigment in skin

Completion Fill in the blanks with terms from Chapter 36.

The three different types of muscle tissue are _____, _____, and _____. Skeletal muscles are controlled by motor neurons. A motor neuron and a skeletal muscle cell meet at a point called a(n) _____. The motor neuron releases a neurotransmitter, called _____, which transmits the impulse to the muscle cell.